

4 mm Mass

Case Study 4

Courtesy of:
Sunnybrook Health Sciences Centre
Toronto, ON, Canada

Clinical History

73 year old female w/ new asymmetry on left breast shown on screening mammography.

Findings

Further follow-up mammography and ultrasound imaging showed suspicious 4 mm mass in left breast at 2:30, 6 cm from nipple. Biopsy revealed invasive carcinoma with lobular features (*Figure 1*).

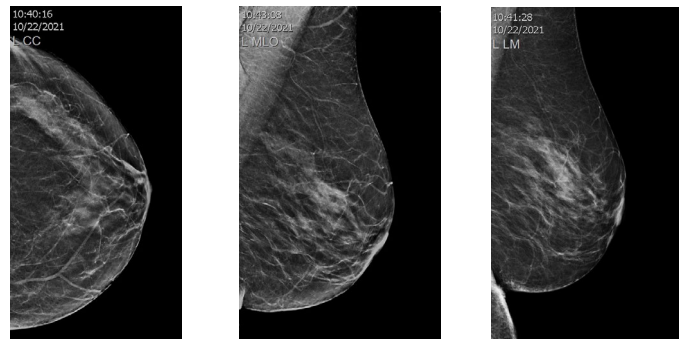


Figure 1

Procedure (Radiology):

Ultrasound-guided localization with MOLLI Marker of left breast mass at 2:30 (*Figure 2*) with post-procedure CC and MLO mammography views (*Figure 3 and Figure 4*).

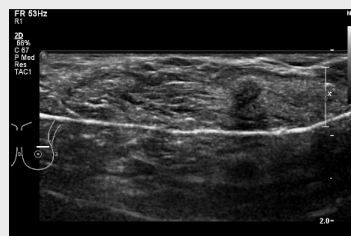


Figure 2

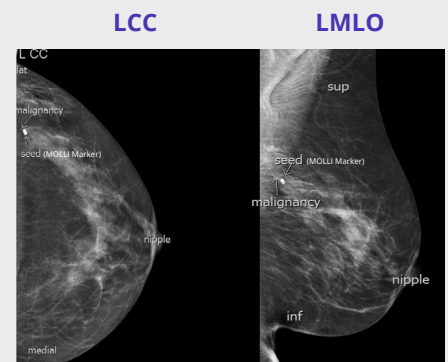


Figure 3

Figure 4

Procedure (Surgery):

- Lumpectomy performed via a lateral inframammary incision.
- MOLLI Wand was used to locate area containing MOLLI Marker and superior, medial, inferior and lateral margins were developed.
- Specimen was sent to Radiology and the marker was confirmed to be in the specimen (*Figure 5*).

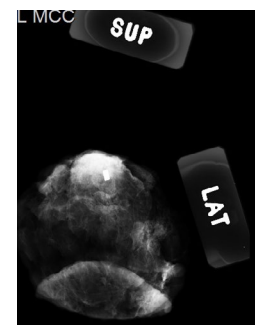


Figure 5

Discussion

Satisfaction Scores:

Radiology – 5/5 Surgery – 4.8/5 Pathology – 4/5 Patient – 4.3/5

Improved Efficiency

MOLLI Marker was implanted the same day as surgery.